



The Better Lithium Disilicate





Designed to meet the highest level of aesthetic expectation, **VINTAGE LD** is a predictable lithium disilicate based all-ceramic system that offers life-like aesthetics with various degrees of natural translucency and lasting durability.

VINTAGE LD offers a versatile solution for a variety of clinical indications to meet the aesthetic requisite of all-ceramic anterior and posterior restorations.

VINTAGE LD restorations offer the option of pressing, layering and staining to attain the desired aesthetic outcome.



Benefits

- Outstanding aesthetics for life-like, bespoke restorations
- Predictable & flexible system that offers cost-effective, time-saving and customized solutions
- Simple and consistent fabrication processing
- A rational shade line-up to meet patient-specific requirements
- Remarkable mechanical properties with outstanding durability
- Exceptional shade stability and impeccable colour match
- Optimal precision for consistent results and fit
- Easy and quick divesting with minimal reaction layer on press ceramic restorations invested with Ceravety Press & Cast multi-purpose investment

Fabrication of naturally aesthetic restorations...

1. Inlays
2. Onlays & Overlays
3. Laminate veneers
4. Anterior and Posterior full crowns
5. 3-Unit Bridge in anterior and premolar region
6. Implant supported restorations



VINTAGE LD Fabrication Techniques...

for discrete aesthetic needs



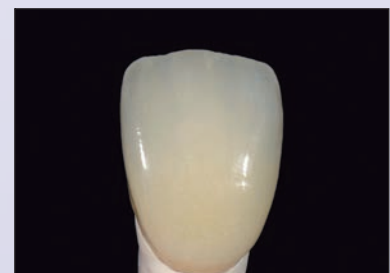
STAINING

Customization of fully anatomical **VINTAGE LD PRESS** restoration with Vintage Art Universal Stains. Optimal for posterior restorations, inlays/onlays, veneers, etc. where aesthetics can be obtained through quick and easy steps.



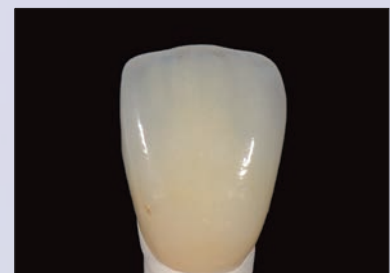
CUT-BACK (Partial Build-Up)

Restorations are created to full contour using **VINTAGE LD PRESS** and only the vestibular incisal area is built up with opalescent **VINTAGE LD** porcelain. This technique enables you to create aesthetic restorations even when space is limited.



LAYERING (Full Build-Up)

Conventional build-up to full contour with **VINTAGE LD** body and enamel porcelain over **VINTAGE LD PRESS** framework for cases with individual aesthetic needs (anterior restorations).





VINTAGE LD Lithium disilicate pressable ceramic ingots are composed of an interlocking network of acicular crystals embedded homogeneously in the glass matrix that imparts remarkable mechanical strength and exceptional crack resistance.

Available in 4 levels of translucency for an extensive clinical application.

Translucency of Ingot	Number of Shades	Indication	Application Technique
T (Highly translucent ingot)	3 Shades	Smaller restorations: Inlays, Onlays & Veneers	Staining with Vintage Art Universal
MT (Moderately translucent)	Total 19 including all Vita* Classical & Whitening Shades	Majority of clinical applications	Cut-back, Full Build-up layering or Staining
LO (Low opacity)	5 Shades	Customized abutments or Slightly discolored tooth preparation	Anatomical shape is individually layered with full build-up or cut-back layering technique
MO (Medium opacity)	3 Shades	Framework fabrication on severely discolored preparations	Cut-back or Full build-up layering technique



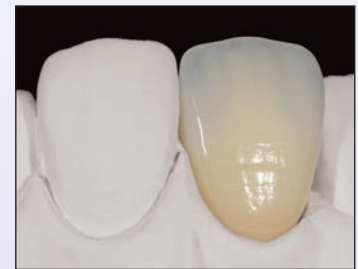
VINTAGE
LD
PORCELAIN



VINTAGE LD low-fusing silicate glass ceramic specifically matched with Lithium disilicate ceramics, exhibits a micro-fine particle structure to efficiently simulate light transmission and diffusion of natural enamel/dentin.

Based on Vita Classical shades, it comes in a range of **17 standard shades** and complementary effect shades for life-like shade reproduction.

This easy to use, highly polishable aesthetic porcelain is efficiently built up to full contour with the conventional layering technique or to modify shades of **VINTAGE LD PRESS** or compatible Press-ceramic framework materials.



VINTAGE
Art
Universal



VINTAGE Art Universal is a low-fusing, universal stain system based on ultra-fine glass technology with intense colour pigment particle structure. VINTAGE Art Universal powder stains and glazes exhibit a homogeneous mixture with convenient handling for remarkable coverage and life-like shade modification of **VINTAGE LD PRESS** and **VINTAGE LD veneering porcelain system**.

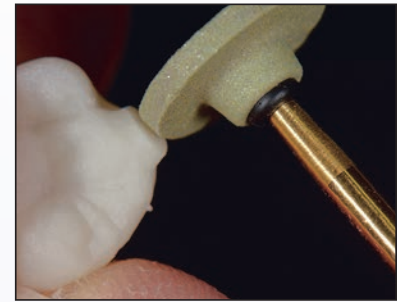
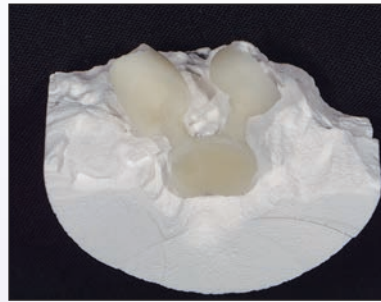
VINTAGE Art Universal stains come in 27 vivid shades which can be mixed with either one of the 2 glaze powders, to attain the illusion of spatial depth and vitality, particularly in monolithic restorations. These versatile stains exhibit excellent firing stability and are compatible with **VINTAGE LD** as well as a wide range of metal-ceramic (**VINTAGE PRO**) and all-ceramic systems (**VINTAGE ZR**, **ZR Lucent**).





Ceravety Press and Cast high performance, multi-purpose investment is designed for easy investing and accurate casting of all types of alloys and pressable ceramics with a smooth surface and a consistently perfect fit.

Ceravety Press and Cast has a special formulation that results in minimal reaction layer on the pressed ceramic, enabling fast and easy divesting without requiring tedious acid treatment.



bespoke restorations

with **VINTAGE LD Shade Spectrum...**

VINTAGE LD PRESS

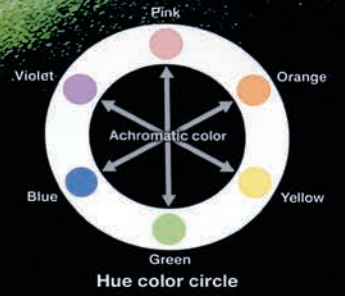
SHADE	W1	W2	W3	A1	A2	A3	A3.5	A4	B1	B2	B3	B4	C1	C2	C3	C4	D2	D3	D4		
VINTAGE LD PRESS	-			T-1			T-2			T-3			T-1			T-2			T-3		
	MT-W1	MT-W2	MT-W3	MT-A1	MT-A2	MT-A3	MT-A3.5	MT-A4	MT-B1	MT-B2	MT-B3	MT-B4	MT-C1	MT-C2	MT-C3	MT-C4	MT-D2	MT-D3	MT-D4		
	-			LO-1*			LO-2*			LO-4*			LO-1*			LO-3*			LO-4*		
	-			MO-1			MO-2			-			MO-1			MO-2			MO-3		

VINTAGE LD PORCELAIN

SHADE	W1	W2	W3	A1	A2	A3	A3.5	A4	B1	B2	B3	B4	C1	C2	C3	C4	D2	D3	D4																																
OPAQUE DENTIN	-			OD-A1: OD-N=1:1			OD-A2: OD-N=1:1			OD-B2: OD-B4=1:1			OD-C2: OD-N=1:1			OD-C2: OD-C4=1:1			OD-D3: OD-N=2:1			OD-D3: OD-B4=1:1																													
BODY	-			OD-A1			OD-A2			OD-A3			OD-A3.5			OD-A4			OD-B1			OD-B2			OD-B3			OD-B4			OD-C1			OD-C2			OD-C3			OD-C4			OD-D2			OD-D3			OD-D4		
OPAL ENAMEL	OPAL 56	OPAL 56 OPAL 57 =2:1	OPAL 56 OPAL 57 =1:1	OPAL 57	OPAL 58	OPAL 59			OPAL 60	OPAL 57	OPAL 58	OPAL 59	OPAL 60	OPAL 58			OPAL 59	OPAL 60	OPAL 57	OPAL 58	OPAL 59																														

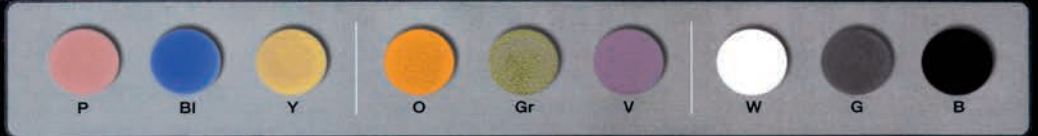
OPAQUE DENTIN	OE-N									
OPAL ENAMEL	OPAL 56	OPAL 57	OPAL 58	OPAL 59	OPAL 60					
ENAMEL EFFECT	T	T-Glass	OPAL T	OPAL SL	BT	PT	GT	YT	OT	AM-Y

GUM COLOR	GUM-1	GUM-2	GUM-3	GUM-4	GUM-5
CORRECTION	ADD-ON B	ADD-ON T			



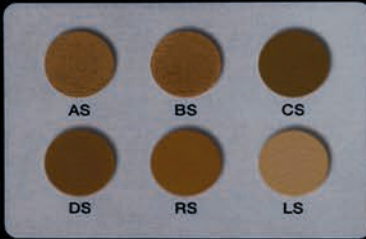
Base Stain

Basic shade adjustment and characterization are performed with these colors.



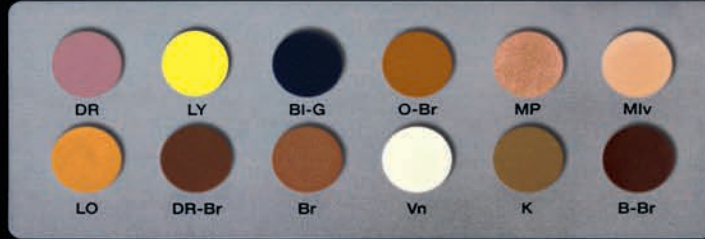
Shade Stain

Shade intensity can be controlled with these materials.

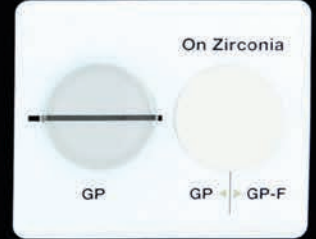


Color Stain

Due to extensive color lineup, desired shade can be obtained easily without complicated mixing.



Glazing Powder



SHOFU INC.



Order Information



VINTAGE LD Basic Set [REF 8500]

- Vintage LD:
 - A1, A2, A3, A3.5, B2, B3
 - Body (15g) x 6 shades,
 - Opal Enamel (15g) x 4 shades,
 - Opal Effect (15g) x 1 shade
- Vintage Art LF:
 - Stains (3g) x 4,
 - Glazing Paste (5g),
 - Vintage Art LF Stain Liquid (50ml),
 - Vintage Mixing Liquid HC (50ml)
 - Instructions for use



VINTAGE Art Universal Basic Color Set [REF P0723]

- 16 powder stains, 2g each:
 Pink, Violet, Yellow, Green, Blue,
 Blue Gray, Orange, Orange Brown,
 Dark Red Brown, White, Black, Khaki, A shade, B shade,
 C shade, D shade, Glazing Powder GP-F (15g),
 Vintage Art Universal Liquid (50ml)
 Color table, Advanced product information



VINTAGE LD Enamel Effect Set [REF 8503]

- Opal Enamel 56 x 1 shade (15g),
- Enamel Effect x 9 shades (15g each)



Ceravety Press & Cast [REF 6966]

- Powder Sachets in 100g x 30pkts (3kg) or Powder Sachets in 100g x 120pkts (12kg),
- Liquid 300ml / 2 litres



SHOFU DENTAL ASIA-PACIFIC PTE. LTD.
 1 Science Park Road, #01-01 / 02 The Capricorn, Singapore Science Park II,
 Singapore 117528 Tel: (65) 6377 2722
 eMail: mailbx@shofu.com.sg www.shofu.com.sg



VLD20200930